



# Plant Floor Systems Implementation

## Lean Manufacturing Assistant (LMA) Enables Improvements at Automotive OEM

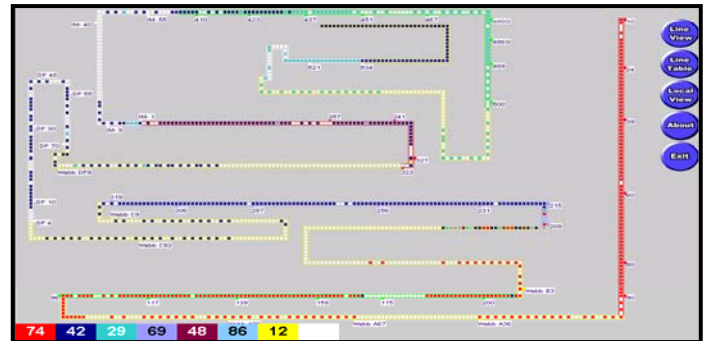
**Client:**  
Automotive OEM

**Objectives:**

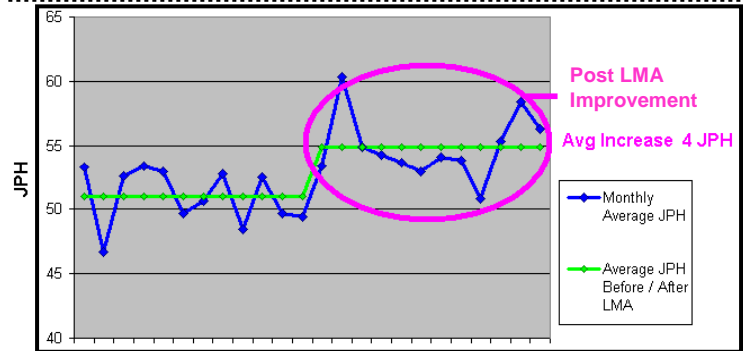
1. Provide capability to track a variety of products through the manufacturing process
2. Provide capability to plan for product changeover requirements in real time
3. Provide capability to successfully schedule and build small product batches with minimal interruption
4. Reduce unscheduled downtime, increase scheduling flexibility and improve overall product throughput

**Project Description:**

An OEM manufacturing facility with multiple products needed a method for tracking product flow and anticipating product changeover in a complex production system. Sandalwood plant floor systems specialists developed a real time system arming plant management and production team members with the data necessary to identify bottlenecks, track special product runs and minimize production interruptions due to product changeovers.



Product Tracking

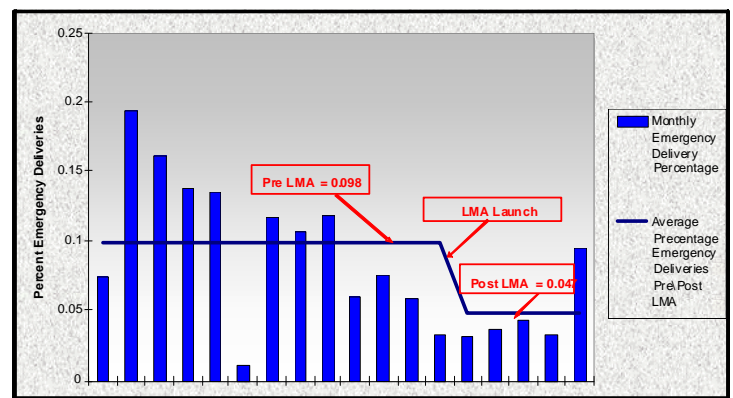


Throughput Improvement

**Results:**

- Installed LMA system on manufacturing floor
- Trained plant management and production team members on LMA system
- Improved throughput 8%
- Reduced daily part shortage occurrences 42%
- Reduced part shortage downtime 58%
- Empowered production team members to improve product changeover process and minimize interruptions to production flow

Similar results were obtained at other LMA installations



Emergency Part Deliveries

Sandalwood is an engineering and ergonomics consulting firm. Since starting in 1989, Sandalwood has designed nearly 1,000 projects that have executed strategic solutions for manufacturers. By providing their knowledge, research, technology, and resources, Sandalwood supports its clients from the executive level to the factory floor so you can...

*Work Smarter. Work Safer.*